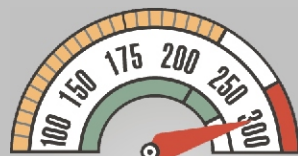


Model CH7.5-150C



Carry-In feature is ZAC patented product loading technology PATENT No. US 6,912,826 B2



CPM (Up to 300 Cartons Per Minute)

MANUFACTURER OF PACKAGING
AND AUTOMATED EQUIPMENT
www.zautomation.com

- Max. carton size 4 x 6 x 10
- Accepts pouches, bottles, vials, blisters
- Automatic or hand loading operation
- Machine programming thru HMI
- Load different bottle size/shape inside the box
- Quick changeover trays for different carton and bottle sizes and shapes
- Pharmaceutical, healthcare, food, beverage and printing applications



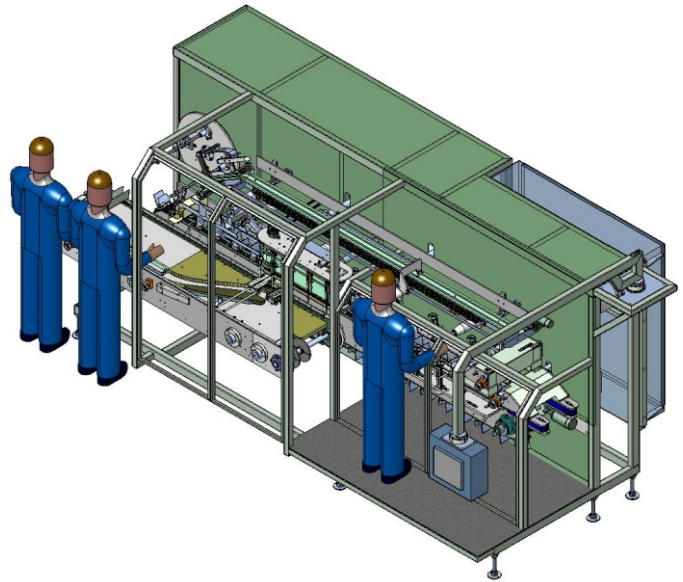
Z Automation Company, Inc.



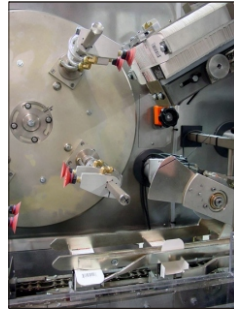
HORIZONTAL CARTONER

CH7.5-150C SPECIFICATIONS

Rated Speed	25-150 cpm
Machine Pitch	7.5"
Machine Length	19.5ft
Machine Width	8.1ft
Aprox. Machine Weight	6,500 lbs
Product Feed	Timing screw, manual
Carton Placing System	4 spindle rotary feeder
Min. Carton Size	0.75" x 1.75" x 4.5"
Max. Carton size	4" x 6" x 10"
Carton Magazine	10 ft
Carton Pick-Off Vacuum	PIAB 50
Product Loading	Continuous
Main Drive	7.5 hp AC
Zero Access Guarding	1/4" Lexan
Settings	Scales, Position Indicator or Automatic
Air Supply	60 PSI @ 16 - 18 CFM
PLC Controller	Allen Bradley PLC 5/04
Operator interface	AB Panel View 550 Touch Screen



Product infeed



Carton infeed



Product transfer - carry-in feature



Discharge

