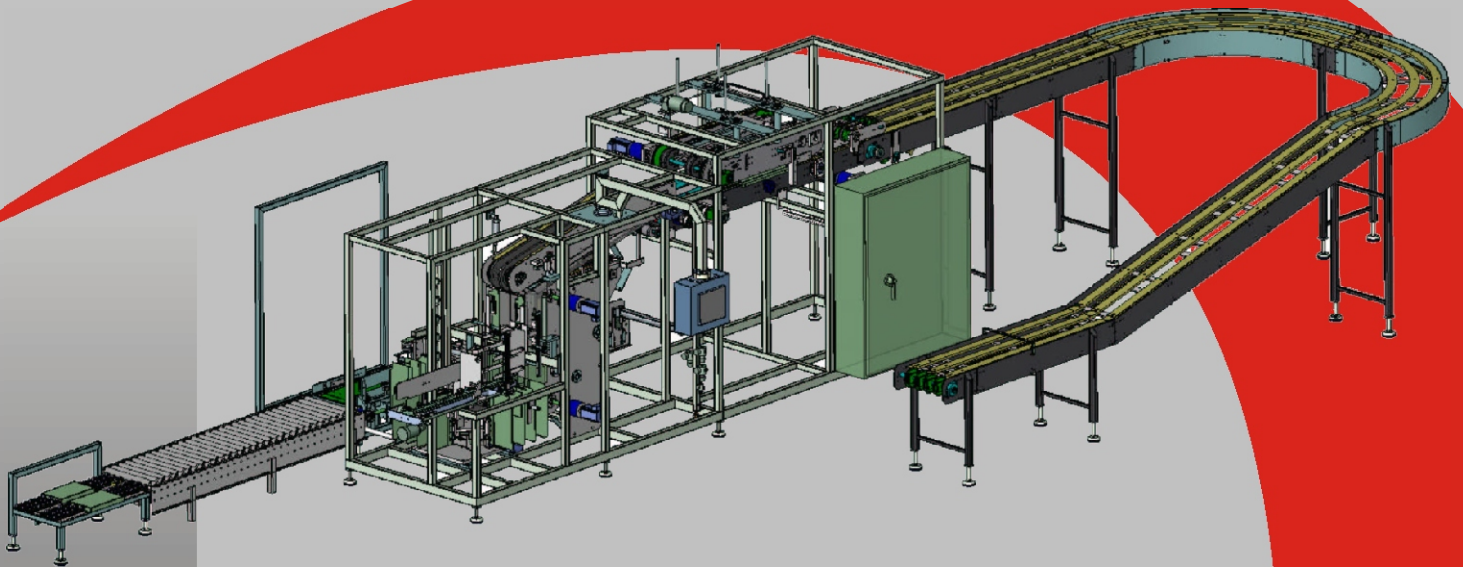


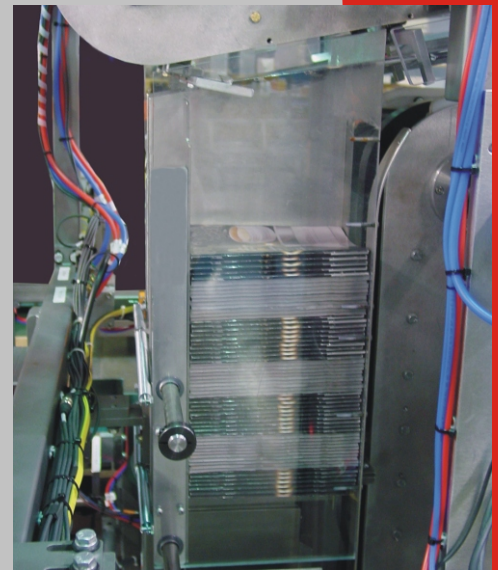


Z Automation Company, Inc.

STACKER AND TRAY PACKER



- Servo Driven Product Infeed Conveyor
- Overhead Transfer Unit
- Servo Driven Stacking Unit
- Servo Driven Product Turner
- Rotary Index Table for Product Transfer
- Partition Insert and Loading
- Tray Loading Station (Tilt Conveyor)



Product Stacking Magazine



BPM (500 Booklets Per Minute)

MANUFACTURERS OF PACKAGING
AND AUTOMATED EQUIPMENT
www.zautomation.com



Model TTP-SI

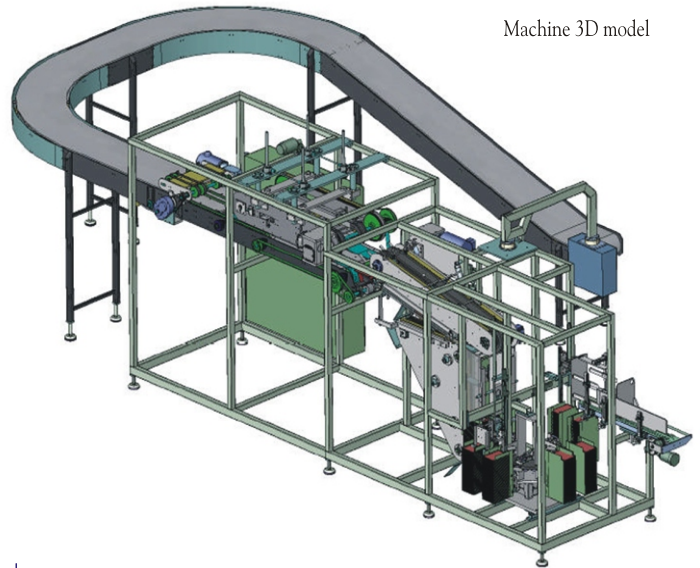


Z Automation Company, Inc.

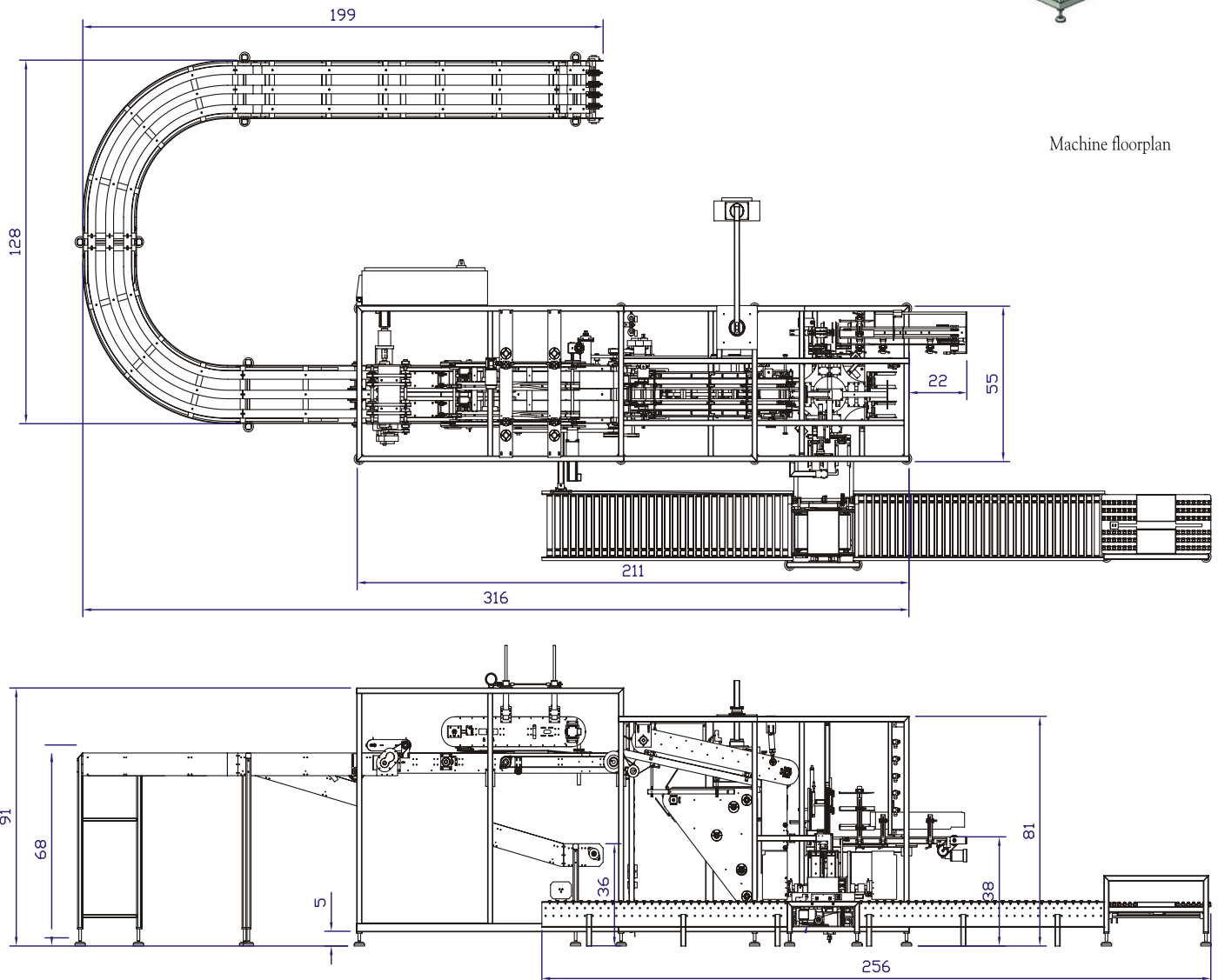
STACKER AND TRAY PACKER

TP-SI SPECIFICATIONS

Rated Speed Interval (Min - Max)	5 - 45 trays per minute
Infeed Pitch	12.5"
Product Feed	500 booklets per minute
Machine Width	12.7 ft
Machine Length	18.7 ft
Aprox. Machine Weight	5,000 lb
Partition Pick-Off Vacuum	PIAB 50
Partition Magazine	4 feet
Settings	Scales
Product Loading	Intermittent
Booklet Format	L:5.5" W:0.188" D:8"
Tray Format	L:12.5" W:16" D:8.25"
Main Drive	Allen Bradley Servo Motor
Zero Access Guarding	1/4" Lexan
Servo Drives	AB Kinetix 6000
Supply Voltage	480 Volt, 3 Phase, 60 Hertz
Air Supply	6 - 18 CFM @ 80 PSI
PLC Controller	Allen Bradley ControlLogix
Operator interface	AB Panel View 1000 Color Touch Screen



Machine 3D model



Machine floorplan