



Z Automation Company, Inc.

- Continuous or Intermittent Motion
- Multiple Stacking Capability
- 10 Minute or Less Tool-Less Change-Over
- No Change Parts
- Literature Feeding Capability
- Maximum Flexibility for Multiple Applications
- Small Ergonomic Footprint



Typical Applications

- Pouches/Sachets
- Bag in Box
- Frozen Foods

HORIZONTAL CARTONING SYSTEM
Model CH9 251

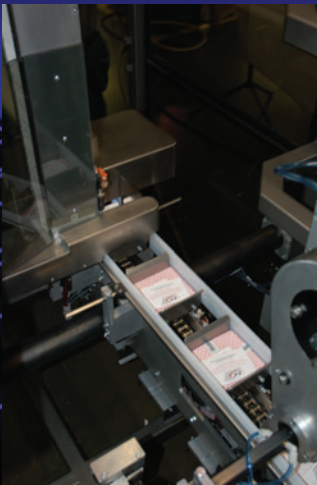


Z Automation Company, Inc.

HORIZONTAL CARTONING SYSTEM Model CH9 251

HORIZONTAL CARTONER PRODUCT FEATURES

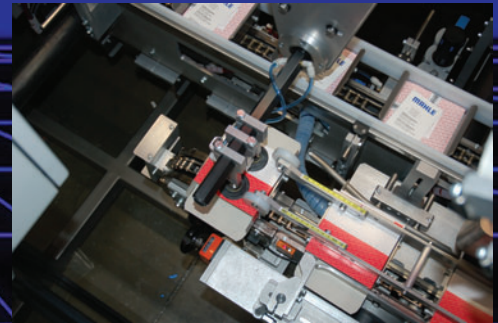
- Configures with AB, ELAU, or Bosch Automation Platforms
- Modular Infeed Options
- Tuck or Glue Options
- Main Machine Movements are Activated by Brushless Servomotors
- Maximum Rate of 100 Cartons per Minute
- Cantilever Style for Easy Cleaning, Maintenance, and Changeover
- Balcony Design Assures Complete Separation Between Motion and Product Handling



Literature Feeding Capability



Smooth Jam Free Loading



Positive Carton Control

